



Woodside Lane, Bexley, DA5 1EY
Offers over £250,000

2 1 1 C

A set of icons representing property features: a bed icon, a sofa icon, and a house icon with a plus sign. The numbers '2', '1', and '1' are placed below the bed, sofa, and house icons respectively. A 'C' icon is placed to the right of the house icon.

The Homes Group are delighted to present to the market this two double bedroom ground floor purpose built maisonette. Offered to the market with no chain and benefiting from a private rear garden, two double bedrooms, spacious living room, good sized kitchen and modern bathroom. We feel this would make an ideal downsize move as well as a first time buy. Just a short walk to local shops and bus routes plus perfectly located for access to the A2 motorway.

Enclosed Porch

Entrance Hall

Living Room

18'10 x 10'7 (5.74m x 3.23m)

Kitchen

10'7 x 9' (3.23m x 2.74m)

Bedroom One

12' x 11' (3.66m x 3.35m)

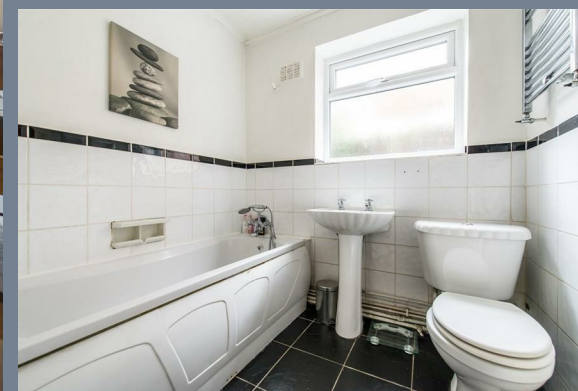
Bedroom Two

12'5 x 10'8 (3.78m x 3.25m)

Bathroom

Garden

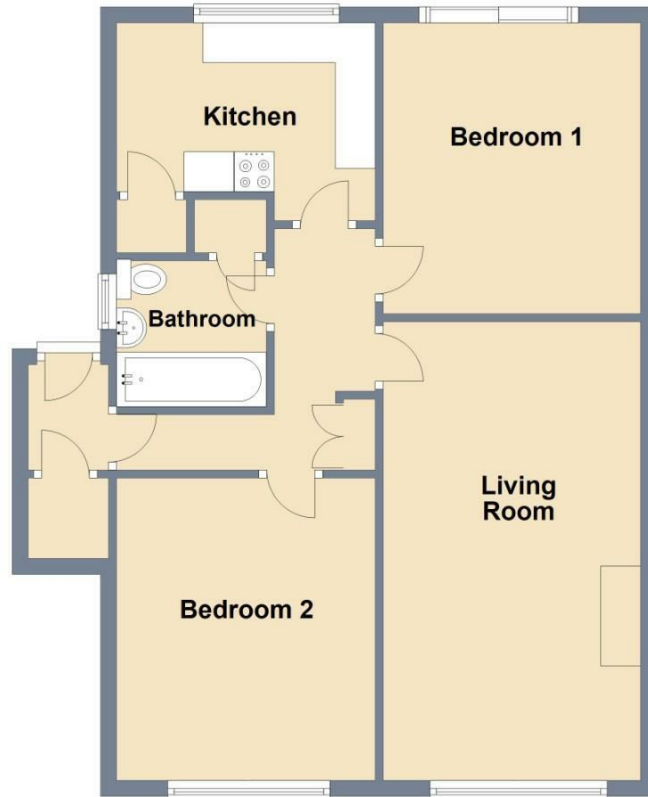
25' (7.62m)





Ground Floor

Approx. 65.1 sq. metres (700.4 sq. feet)



Total area: approx. 65.1 sq. metres (700.4 sq. feet)



Energy Efficiency Rating		Current	Potential
Very energy efficient - lower running costs			
(92 plus) A			
(81-91) B			
(69-80) C		70	78
(55-68) D			
(39-54) E			
(21-38) F			
(1-20) G			
Not energy efficient - higher running costs			
England & Wales	EU Directive 2002/91/EC		

Viewing

Please contact our The Homes Group Office on 01322 532 889 if you wish to arrange a viewing appointment for this property or require further information.

These particulars, whilst believed to be accurate are set out as a general outline only for guidance and do not constitute any part of an offer or contract. Intending purchasers should not rely on them as statements of representation of fact, but must satisfy themselves by inspection or otherwise as to their accuracy. No person in this firm's employment has the authority to make or give any representation or warranty in respect of the property.